

## B U T T O N S T M

tip type	naziv description	velikost size	barva colour	opcijski opis 1 optional data 1	opcijski opis 2 optional data 2
TM11	TIPKA BUTTON	1M	<input type="checkbox"/> PW bela-sijaj white-gloss <input type="checkbox"/> SB črna-mat black-mat <input type="checkbox"/> ES srebrna-mat silver-mat <input type="checkbox"/> IW bež-sijaj ivory-gloss	<input type="checkbox"/> NT nevtral neutral <input type="checkbox"/> IN indikator indicator <input type="checkbox"/> CD indikator+vrvica indicator+cord	01 02 03 ... ...
TM12	TIPKA BUTTON	1M			
TM21	POLNILO BLANK	1M			
...					

## TIPKA 1M



- TM11PW
- TM11SB
- TM11ES
- TM11IW

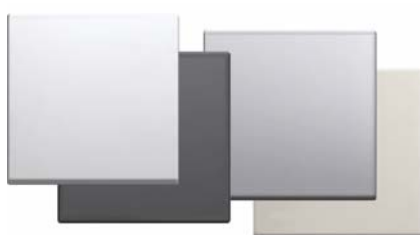
- zamenljiva tipka velikosti 1M
- ustreza EN 60669-1

*BUTTON 1M*

- replaceable button 1M
- in accordance with EN 60669-1



## TIPKA 2M



- TM12PW
- TM12SB
- TM12ES
- EM12IW

- zamenljiva tipka velikost 2M z nosilcem tipke
- uporablja se pri nadgradnji stikala ali tipkala velikosti 1M v velikost 2M
- ustreza EN 60669-1

*BUTTON 2M*

- replaceable button 2M with button carrier
- to upgrade switch or push button from size 1M to size 2M
- in accordance with EN 60669-1



## POLNILO 1M



- TM21PW
- TM21SB
- TM21ES
- TM21IW

- za zapolnjevanje praznih mest
- ustreza EN 60669-1

*BLANK 1M*

- blank modul to fill up empty spaces
- in accordance with EN 60669-1



## POLNILO 2M

- TM22PW
- TM22SB
- TM22ES
- TM22IW

- za zapolnjevanje praznih mest
- ustreza EN 60669-1

*BLANK 2M*

- blank modul to fill up empty spaces
- in accordance with EN 60669-1





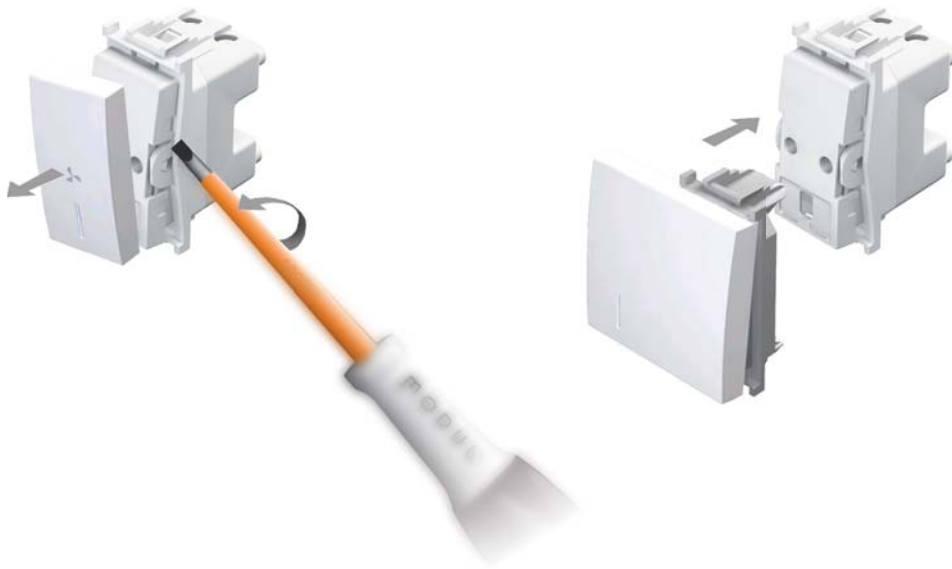
- TM31PW
- TM31SB
- TM31ES
- TM31IW

UVODNICA 1M

- uvodnica za kabel  
- ustreza EN-60669-1

CABLE OUTLET 1M

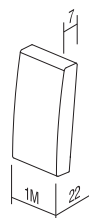
- outlet for cable  
- in accordance with EN-60669-1



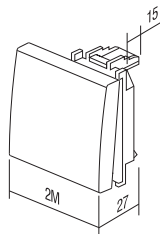
STANDARDNE GRAFIKE

STANDARD SYMBOLS

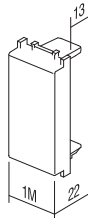
01	02	03	04	05	06	07	08	09	10	11	12	20	21	22	23
												+	-		
24	25	26	27	28	29	30	31	32	33	34	35	36	37	38	39
			! alarm	A alarm	OFF	ON	+				AC				



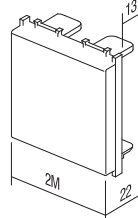
TM11



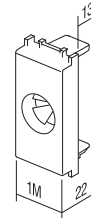
TM12



TM21



TM22



TM31