

# NH1C gG 32A/500V



## Specifikacije

|                  |   |
|------------------|---|
| Šifra proizvoda  | 004184208                                     |
| Opis             | NH1C gG 32A/500V                              |
| Težina           | .225  |
| Nivo             | Topljivi umetci NH (gG) 690V AC               |
| AC Prekidna moć  | 120   |
| Karakteristika   | gL/gG (cable protection/equipment protection) |
| Indikator        | Combination fuse status indicator             |
| Grupa proizvoda  | Niskonaponski topljivi umetci NV/NH           |
| Nazivni AC napon | 500   |
| Nazivna struja   | 32  |
| Veličina         | NH0   |
| Tip              | NH  |

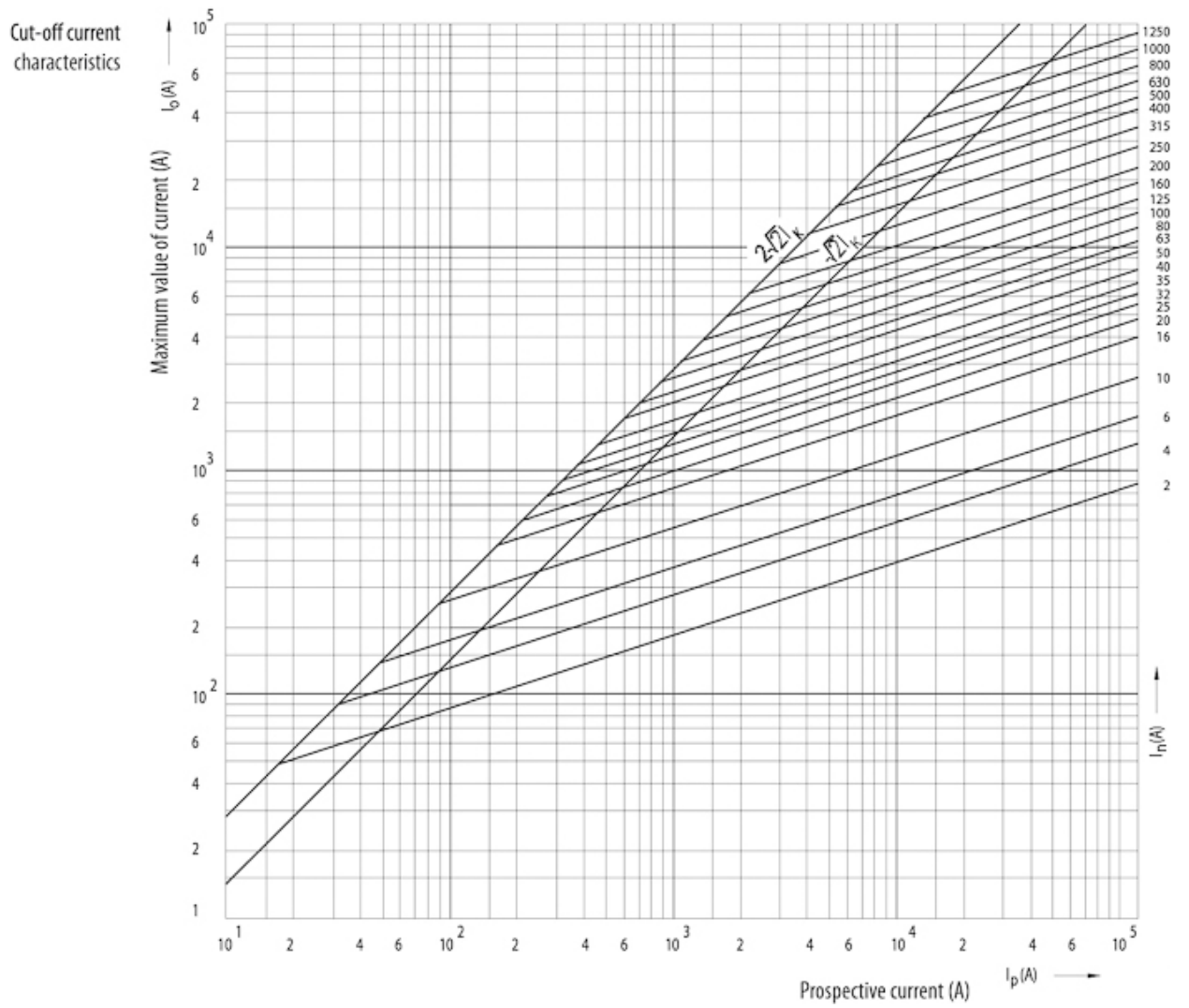
Web stranica proizvoda [🔗](#)

## Druga dokumentacija



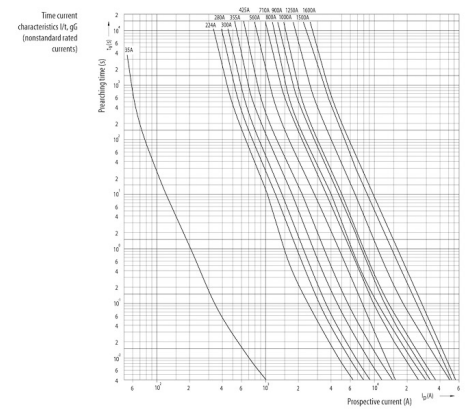
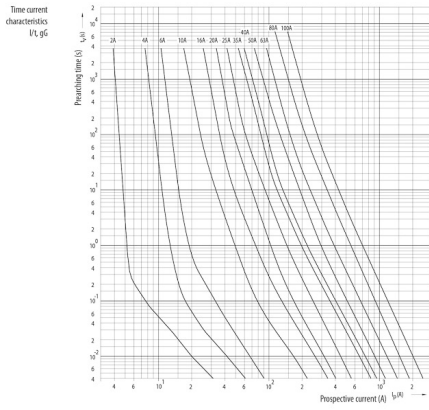
CE izjava  
Tehnički podaci

# Diagram I2t



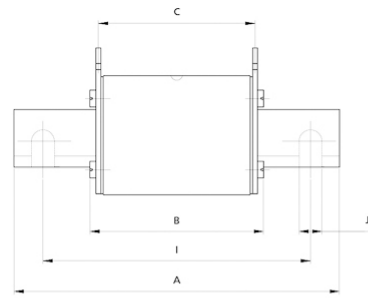
# Vremensko-strujna karakteristika

## I/t



# Dimenzije

|           | A   | B  | C  | D  | E  | F   | G   | H   | I   | J  | K |       |
|-----------|-----|----|----|----|----|-----|-----|-----|-----|----|---|-------|
| NV00C     | 79  | 53 | 47 | 35 | 15 | 21  | 52  | 7,5 |     |    | 6 | kombi |
| NV00C I   | 79  | 53 | 47 | 35 | 15 | 21  | 52  | 7,5 |     |    | 6 | kombi |
| NV00      | 79  | 53 | 47 | 35 | 15 | 28  | 56  | 12  |     |    | 6 | kombi |
| NV00 I    | 79  | 53 | 47 | 35 | 15 | 28  | 56  | 12  |     |    | 6 | kombi |
| NV0       | 125 | 68 | 65 | 35 | 15 | 28  | 56  | 12  |     |    | 6 | kombi |
| NV1C      | 135 | 68 | 65 | 40 | 15 | 28  | 61  | 12  |     |    | 6 | kombi |
| NV1C I    | 135 | 68 | 65 | 40 | 15 | 28  | 61  | 12  |     |    | 6 | kombi |
| NV1       | 135 | 72 | 65 | 40 | 20 | 46  | 65  | 14  |     |    | 6 | kombi |
| NV1 I     | 135 | 72 | 65 | 40 | 20 | 46  | 65  | 14  |     |    | 6 | kombi |
| NV2C      | 150 | 72 | 65 | 48 | 20 | 46  | 73  | 14  |     |    | 6 | kombi |
| NV2C I    | 150 | 72 | 65 | 48 | 20 | 46  | 73  | 14  |     |    | 6 | kombi |
| NV2       | 150 | 72 | 65 | 48 | 26 | 54  | 73  | 14  |     |    | 6 | kombi |
| NV2 I     | 150 | 72 | 65 | 48 | 26 | 54  | 73  | 14  |     |    | 6 | kombi |
| NV3C      | 150 | 72 | 65 | 60 | 26 | 54  | 84  | 14  |     |    | 6 | kombi |
| NV3       | 150 | 72 | 65 | 60 | 33 | 65  | 84  | 14  |     |    | 6 | kombi |
| NV4       | 200 | 75 | 66 | 87 | 50 | 100 | 121 | 24  | 150 | 16 | 8 |       |
| NV4a      | 200 | 99 | 87 | 85 | 50 | 95  | 121 | 27  |     |    | 6 |       |
| NV4a SI*  | 200 | 99 | 87 | 85 | 50 | 95  | 121 | 27  |     |    | 6 |       |
| NV1/1000V | 155 | 90 | 87 | 40 | 20 | 45  | 59  | 9   |     |    | 6 |       |



|     | Striker pin |      |      |     |
|-----|-------------|------|------|-----|
|     | K           | L    | M    | S1  |
| 00C | 0           | 20.7 | 16.7 | 7.5 |
| 00  | 0           | 20.7 | 16.7 | 7.5 |
| 1   | 13.7        | 19.7 | 25   | 12  |
| 2   | 16.2        | 27.4 | 25   | 12  |
| 3   | 17          | 35.6 | 25   | 12  |
| 4a  | 24          | 49   | 25   | 12  |

