

96315 PARRI

General Information

Material number	96315
Type	ceiling luminaire
Product segment	Indoor
Theme	sonstige / nicht zuordenbar

Dimensions

Article Height (in mm)	70
Article Width (in mm)	90
Article Length (in mm)	800
Net Weight	0.715 Kilogram

Material & Colour

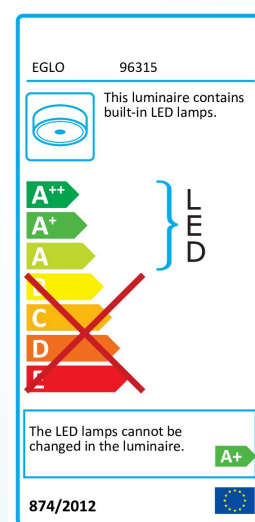
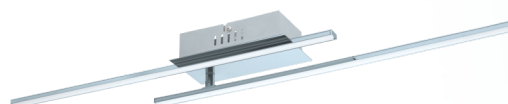
Enclosure Material	aluminium
Enclosure Colour	chrome
Glass/Shade Material	plastic
Glass/Shade Colour	white

Functionality

Switch Type	without switch
Function	LED not replaceable
Battery	No

Technical Information

Protection Degree	IP20
Protection Class	2



Technical changes reserved

Mains Voltage	220-240V,50/60Hz
Operation Voltage	24V
Dimmable	No
Certificate	ENEC



Illuminant 1

Nominal Luminous Flux (in lm)	650
Equivalence With Incandescent Lamp (W)	50
Colour Temperature	3000K warm white
Nominal Lifetime (in h)	25000
Switching Cycles	15000
Colour Rendering Index (Ra, CRI)	>80
Energy Efficiency Class	A+
Rated Lamp Power (0,1W precision)	6
Colour Tolerance (LED, SDCM)	<6

Technical changes reserved



EGLO Leuchten GmbH
Heiligkreuz 22 | 6136 Püll | Austria

Tel. +43 (0) 5242 / 6996 - 0
Fax: +43 (0) 5242 / 6996 - 938
www.eglo.com

my light | my style