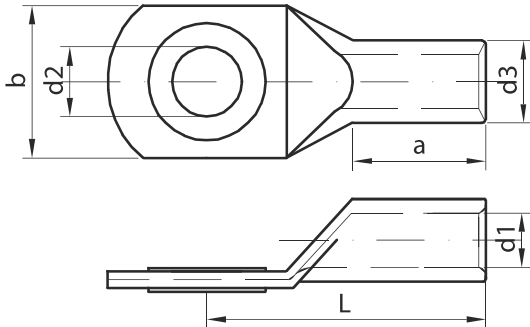




KABLOVSKE PAPUČICE ZA GNJEČENJE ALCU  
 CABLE CRIMPING TERMINALS ALCU  
 КАБЕЛЬНЫЕ НАКОНЕЧНИКИ ALCU



MATERIJAL: Al, Cu  
 STANDARD: SRPS N.F4.101  
 MATERIAL: Al, Cu  
 STANDARD: SRPS N.F4.101  
 МАТЕРИАЛ: Al, Cu  
 СТАНДАРТ: SRPS N.F4.101



R.broj Nr. п/п	Presek provodnika Cable intersection Сечение	Kodni broj Code Код (номер)	Tip Type Тип	Dimenzije (mm) Dimension (mm) Размер (мм)						Broj presovanja Num.of pressmark Номер опрессовк	Pakovanje Packing Упаковка	Masa Weight Вес
				a	b	d1	d2	d3	L			
1	16	P40-52-01	AlCu 16/6	25	21.3	5.8	6.5	12	45	4/2	100	1.430
2	16	P40-52-02	AlCu 16/8	25	21.3	5.8	8.5	12	45	4/2	100	1.440
3	16	P40-52-38	AlCu 16/10	25	21.3	5.8	10.5	12	45	4/2	100	1.400
4	16	P40-52-35	AlCu 16/12	25	21.3	5.8	13	12	45	4/2	100	1.500
5	25	P40-52-03	AlCu 25/8	26	21.3	6.8	8.5	12	47	4/2	100	1.428
6	25	P40-52-04	AlCu 25/10	26	23	6.8	10.5	12	47	4/2	100	1.606
7	25	P40-52-34	AlCu 25/12	26	27.5	6.8	13	12	47	4/2	100	1.890
8	35	P40-52-30	AlCu 35/8	28	21	8	8.5	14	48	4/2	100	1.860
9	35	P40-52-05	AlCu 35/10	28	26	8	10.5	14	48	4/2	100	2.100
10	35	P40-52-06	AlCu 35/12	28	28.5	8	13	14	53	4/2	100	2.400
11	50	P40-52-31	AlCu 50/8	28	25	9.8	8.5	16	50	4/2	50	2.450
12	50	P40-52-07	AlCu 50/10	28	25	9.8	10.5	16	50	4/2	50	2.540
13	50	P40-52-08	AlCu 50/12	28	28	9.8	13	16	53	4/2	50	2.780
14	70	P40-52-37	AlCu 70/8	29	28	11.2	8.5	18.5	58	4/2	50	1.700
15	70	P40-52-09	AlCu 70/10	29	28	11.2	10.5	18.5	58	4/2	50	1.830
16	70	P40-52-10	AlCu 70/12	29	30	11.2	13	18.5	59	4/2	50	1.996
17	70	P40-52-39	AlCu 70/16	29	30	11.2	17	18.5	59	4/2	50	2.100
18	95	P40-52-11	AlCu 95/10	44	34	13.2	10.5	22	74	5/3	50	2.670
19	95	P40-52-12	AlCu 95/12	44	34	13.2	13	22	75	5/3	50	2.790
20	95	P40-52-13	AlCu 95/16	44	34	13.2	17	22	75	5/3	50	3.808
21	120	P40-52-32	AlCu 120/10	48	34	14.7	10.5	23	80	6/3	25	3.500
22	120	P40-52-14	AlCu 120/12	48	34	14.7	13	23	80	6/3	25	3.420
23	120	P40-52-15	AlCu 120/16	48	36	14.7	17	23	80	6/3	25	4.600
24	150	P40-52-41	AlCu 150/8	55	35	16.3	8.5	25	98	6/3	25	2.000
25	150	P40-52-33	AlCu 150/10	55	35	16.3	10.5	25	98	6/3	25	2.286
26	150	P40-52-16	AlCu 150/12	55	35	16.3	13	25	98	6/3	25	2.350
27	150	P40-52-17	AlCu 150/16	55	38	16.3	17	25	98	6/3	25	2.680
28	150	P40-52-18	AlCu 150/20	55	40	16.3	21	25	98	6/3	25	2.740
29	185	P40-52-42	AlCu 185/8	58	40	18.3	8.5	28.5	100	6/3	25	2.900
30	185	P40-52-36	AlCu 185/10	58	40	18.3	10.5	28.5	100	6/3	25	3.000
31	185	P40-52-19	AlCu 185/12	58	40	18.3	13	28.5	100	6/3	25	3.100
32	185	P40-52-20	AlCu 185/16	58	40	18.3	17	28.5	100	6/3	25	3.650
33	185	P40-52-21	AlCu 185/20	58	44	18.3	21	28.5	100	6/3	25	3.700
34	240	P40-52-40	AlCu 240/10	62	44	21	10.5	32	106	7/3	25	4.000
35	240	P40-52-22	AlCu 240/12	62	44	21	13	32	106	7/3	25	4.200
36	240	P40-52-23	AlCu 240/16	62	44	21	17	32	107	7/3	25	4.490
37	240	P40-52-24	AlCu 240/20	62	45	21	21	32	107	7/3	25	4.600
38	300	P40-52-25	AlCu 300/16	62	45	23.3	17	34	107	7/3	25	4.900
39	300	P40-52-26	AlCu 300/20	62	45	23.3	21	34	107	7/3	25	5.100