

Philips Hue White  
ambiance  
Pillar single spotlight ext.

**Extension spotlight**  
GU10  
Black  
Smart control with Hue bridge\*

56330/30/P8



## Light for your moments

from sunrise to sunset

Extend your Philips Hue system with additional white ambiance spots and enjoy warm to cool white light. The Hue bridge is a smart control that comes with the starter kit. Connect the spot to the bridge and control it however you like.

### High-quality light and design

- High light output

### Light for your moments

- Relax, read, concentrate and energise with light recipes
- Installation-free dimming
- Create your ambience with warm white to cool daylight
- Wake up and go to sleep naturally
- Smart control, home and away
- Set timers for your convenience
- Control it your way
- Requires a bridge or switch

# PHILIPS

Pillar single spotlight ext.  
Extension spotlight GU10, Black, Smart control with Hue bridge\*

5633030P8

# Highlights

## High light output

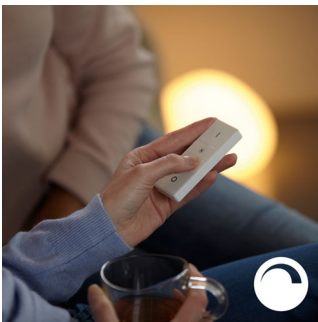
High-quality light with strong light output, providing plenty of white light for any moment or task.

## Light for your daily routines



Light influences our mood and behaviour. Philips Hue can help you to customise your daily routines into moments that you can enjoy. Skip your morning coffee and get ready for the day with cool, bright-white daylight that helps to energise your body and mind. Stay focused with finely tuned bright-white light. Or put your feet up and relax with a soft glow of white light for the perfect end to the day.

## Installation-free dimming



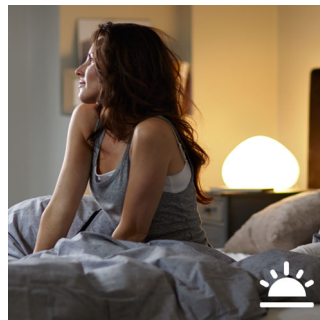
Experience guaranteed smooth dimming with Philips Hue. Not too bright. Not too dark. Just right. No need for wires, an electrician or installation

## Create your ambience



Set the right ambience for any moment and decorate your home with warm to cool white light. Enjoy different styles throughout the year, whether it's the crisp white light reminding you of a spring breeze, the warm white light of a summer sun or the ice-cool daylight of winter. Connection with the Philips Hue bridge is required for this functionality.

## Wake up and go to sleep



Philips Hue will help to get you out of bed the way you like it, helping you start your day feeling refreshed. The light's brightness increases gradually, mimicking the effect of sunrise and helps you wake up naturally, instead of being woken up by the loud sound of an alarm clock. Start your day the right way. In the evening, the relaxing warm white light helps you to unwind, relax and prepare your body for a good night's sleep. Connection with

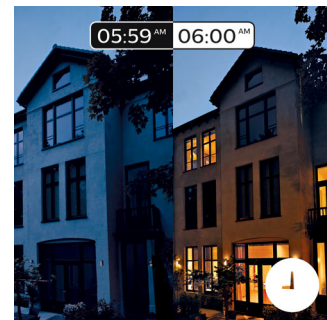
the Philips Hue bridge is required for this functionality.

## Smart control, home and away



With the Philips Hue iOS and Android apps you can control your lights remotely, from wherever you are. Check if you have forgotten to switch your lights off before you left home, and switch them on if you are working late. Connection with the Philips Hue bridge is required for this functionality.

## Timers for your convenience



Philips Hue can make it seem like you're at home when you're not, using the schedule function in the Philips Hue app. Set the lights to come on at a pre-set time, so the lights are on when you arrive home. You can even set rooms to light up at different times. And of course, you can let the lights turn off gradually during the night, so you never have to worry whether you've left any lights on. Connection with the Philips Hue bridge is required for this functionality.

# Specifications

## Design and finishing

- Material: metal
- Colour: black

## Extra feature/accessory incl.

- Dimmable with remote control
- LED lamp(s) included
- Perfectly suited for creating ambience
- Adjustable spot head
- ZigBee Light Link
- Four light recipes
- Upgradeable with Philips HUE bridge

## Product dimensions and weight

- Height: 12 cm
- Length: 10.3 cm
- Width: 10.3 cm
- Net weight: 0.958 kg

## Technical specifications

- Mains power: Range 220 V–240 V, 50-60 Hz
- Bulb technology: 230 V
- Number of bulbs: 1
- Fitting/cap: GU10
- Wattage bulb included: 5.5 W
- Maximum wattage replacement bulb: 50 W
- Light colour: cool white

- Beam angle: 45°
- Fixture dimmable
- LED
- Built-in LED
- Energy class included light source: built-in LED + bulb of class A
- Fixture is compatible with bulb(s) of class: A+ to E
- Lifetime up to: 15,000 hrs
- IP code: IP20, protection against objects bigger than 12.5 mm, no protection against water
- Class of protection: II - double insulated
- Light source equivalent to traditional bulb of: 25 W
- Lumen output bulb included: 250 lm

## Service

- Warranty: 2 year(s)

## Packaging dimensions and weight

- Height: 14.3 cm
- Length: 17.8 cm
- Width: 13.4 cm
- Weight: 1.050 kg

## Miscellaneous

- Especially designed for: Living Room and Bedroom
- Style: Contemporary
- Type: Spot light



Issue date 2018-03-01

Version: 2.0.1

12 NC: 9150 018 08007  
EAN: 87 18696 15939 2

© 2018 Philips Lighting Holding B.V.  
All Rights reserved.

Specifications are subject to change without notice.  
Trademarks are the property of Philips Lighting Holding B.V. or their respective owners.

[www.philips.com](http://www.philips.com)

\* \*\*Hue bridge sold separately