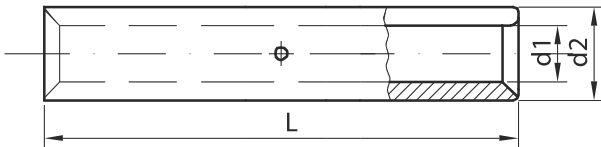




SPOJNE ČAURE AI
JOINTING SLEEVES AI
СОЕДИНИТЕЛЬНЫЕ ВТУЛКИ AI

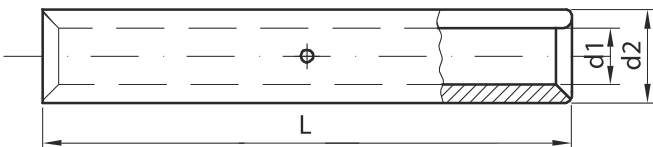


MATERIJAL: AI
STANDARD: SRPS N.F.4.101
MATERIAL: AI
STANDARD: SRPS N.F.4.101
МАТЕРИАЛ: AI
СТАНДАРТ: SRPS N.F.4.101



R.broj Nr.	Presek provodnika Cable intersection	Kodni broj Code	Tip Type	Dimenzije (mm) Dimension (mm)			Broj presovanja Num.of pressmark Номер опрессовки	Pakovanje Packing Упаковка	Masa Weight Вес
				a	b	d1			
1	16	P40-27-01	AI 16	5.8	12	40	2-2/-	100	0.838
2	25	P40-27-02	AI 25	6.8	12	50	3-3/-	100	1.134
3	35	P40-27-03	AI 35	8	14	55	3-3/-	100	1.672
4	50	P40-27-04	AI 50	9.8	16	59	3-3/-	100	2.060
5	70	P40-27-05	AI 70	11.2	18.5	62	3-3/2-2	50	1.430
6	95	P40-27-06	AI 95	13.2	22	88	5-5/3-3	50	2.600
7	120	P40-27-07	AI 120	14.7	23	105	6-6/3-3	50	3.530
8	150	P40-27-08	AI 150	16.3	25	117	7-7/3-3	25	2.286
9	185	P40-27-09	AI 185	18.3	28.5	125	7-7/3-3	25	3.620
10	240	P40-27-10	AI 240	21	32	140	7-7/3-3	25	4.325
11	300	P40-27-11	AI 300	23.3	34	140	7-7/3-3	25	4.710

SPOJNE ČAURE AI
JOINTING SLEEVES AI
СОЕДИНИТЕЛЬНЫЕ ВТУЛКИ AI



MATERIJAL: AI
STANDARD: DIN 46267/2
MATERIAL: AI
STANDARD: DIN 46267/2
МАТЕРИАЛ: AI
СТАНДАРТ: DIN 46267/2



R.broj Nr.	Presek provodnika Cable intersection	Kodni broj Code	Tip Type	Dimenzije (mm) Dimension (mm)			Broj presovanja Num.of pressmark Номер опрессовки	Pakovanje Packing Упаковка	Masa Weight Вес
				a	b	d1			
1	16	D40-27-01	AI 16	5.8	12	50	3-3/-	100	1.570
2	25	D40-27-02	AI 25	6.8	12	70	4-4/2-2	100	1.350
3	35	D40-27-03	AI 35	8	14	85	5-5/3-3	100	1.870
4	50	D40-27-04	AI 50	9.8	16	85	5-5/3-3	100	2.220
5	70	D40-27-05	AI 70	11.2	18.5	105	6-6/3-3	50	1.680
6	95	D40-27-06	AI 95	13.2	22	105	6-6/3-3	50	2.945
7	120	D40-27-07	AI 120	14.7	23	105	6-6/3-3	50	4.090
8	150	D40-27-08	AI 150	16.3	25	125	7-7/3-3	25	2.560
9	185	D40-27-09	AI 185	18.3	28.5	125	7-7/3-3	25	3.710
10	240	D40-27-10	AI 240	21	32	145	7-7/3-3	25	4.380
11	300	D40-27-11	AI 300	23.3	34	145	7-7/3-3	25	4.710
12	400	D40-27-12	AI 400	28	42	210	-/5-5	10	3.120
13	500	D40-27-13	AI 500	31	46	210	-/5-5	10	3.576

